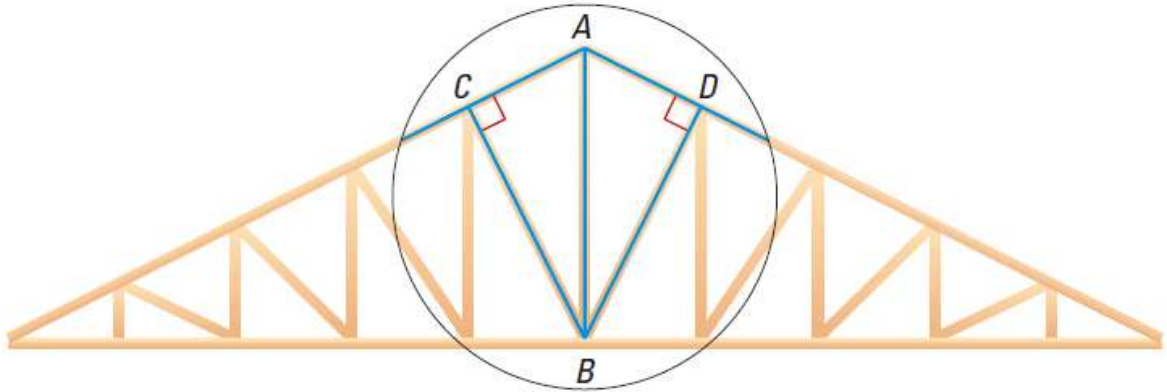
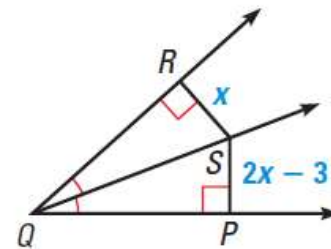


13. **Roof Trusses** In the diagram of the roof truss shown below, you are given that \overline{AB} bisects $\angle CAD$ and that $\angle ACB$ and $\angle ADB$ are right angles. What can you say about \overline{BC} and \overline{BD} ? Why?



34. **Multiple Choice** In the figure at the right, what is SR ?

- (A) 2 (B) 3
 (C) 4 (D) 5



35. **Multiple Choice** In the figure above, what is SP ?

- (F) 2 (G) 3 (H) 4 (J) 5

36. **Multiple Choice** What can you say about the figure below, in which \overleftrightarrow{BE} is the perpendicular bisector of \overline{AC} ?

- (A) $AB = 20$ (B) $AC = 16$
 (C) $DC = 8$ (D) All of these

